

2.4 mm/1.85 mm DC - 50 GHz, Coaxial Adapters, Between-Series

DESCRIPTION

"KPC240F185F, KPC240F185M, KPC240M185F, and KPC240M185M"

coaxial adapters between 2.4 mm and 1.85 mm are small size, low SWR, and low loss.

They are designed for broadband measurement, instrument, and system applications.

SPECIFICATIONS

Electrical:

Frequency Range	DC - 50 GHz
SWR	< 1.25 (*)
Insertion Loss	< 0.4 dB (**)
Electrical Length	17.5 mm (Nominal)
Temperature Range	-55 to +125 °C

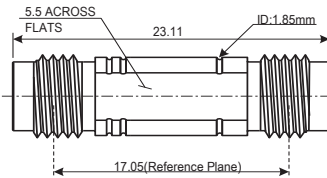
Mechanical:

Body and Outer Conductor	Passivated Stainless Steel
Inner Conductor	Gold Plated Beryllium Copper and Brass
Coupling Torque	90 N-cm (Nominal)
Connect/Disconnect Life	> 1,000 Cycles

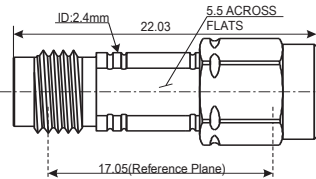


Production Status
2 Weeks Lead-Time
for Shipping

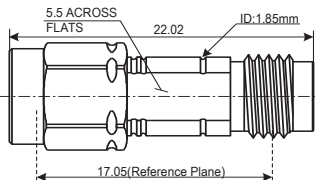
TYPE: KPC240F185F 2.4 mm Female/1.85 mm Female



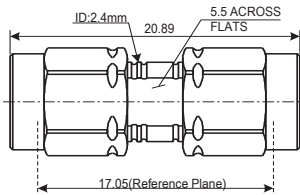
TYPE: KPC240F185M 2.4 mm Female/1.85 mm Male



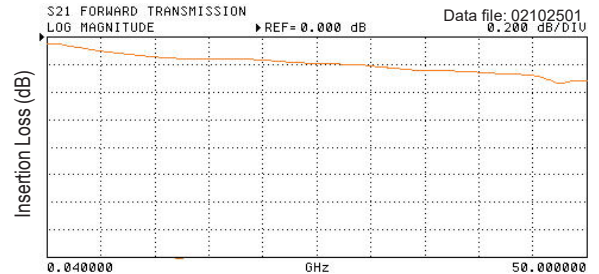
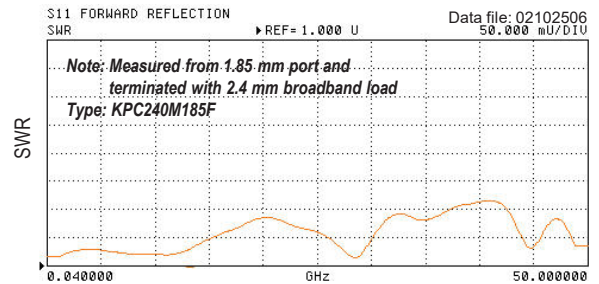
TYPE: KPC240M185F 2.4 mm Male/1.85 mm Female



TYPE: KPC240M185M 2.4 mm Male/1.85 mm Male

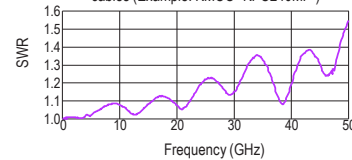


Typical Performance

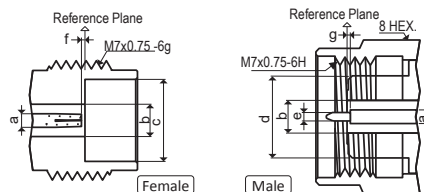


These adapters are designed to eliminate SWR degradation as shown in the below chart.

This 2.4 mm/2.4 mm coaxial adapter is mated to 1.85 mm test port cables (Example: KMCO "KPC240MF")



Interface Mating Dimensions of KPC240 (2.4 mm Connectors) and KPC185 (1.85 mm Connectors)



NOTE:
All dimensions are in millimeters.

KPC240(2.4 mm)		KPC185(1.85 mm)	
a	φ 1.042	a	φ 0.803
b	φ 2.400	b	φ 1.850
c	φ 4.770	c	φ 4.770
d	φ 4.750	d	φ 4.750
e	φ 0.511	e	φ 0.511
f	0-0.050	f	0-0.050
g	0-0.050	g	0-0.050

RoHS Compliant

REACH Compliant

Specifications Subject to Change Without Notice

Copyright(C) 2002-2017 Kawashima Manufacturing Co., Ltd. <All rights reserved.>

Rev. 03 June 2017



Kawashima Manufacturing Co., Ltd.

1-3-5 Higashi-ikuta, Tama-ku,
Kawasaki 214-0031 JAPAN

TEL: +81-44-911-7073
http://www.kmco.biz/

FAX: +81-44-911-9621
e-mail: sales@kmco.co.jp