

# 1.85 mm DC - 65 GHz, Two-Hole Flange Launchers & Glass Beads

## DESCRIPTION

"KPC185M302 and KPC185F302" two-hole flange launchers and "GB185" glass beads are designed for broadband devices and units with coaxial I/O interfaces.

## SPECIFICATIONS

### Connectors

#### Electrical:

Frequency Range DC - 65 GHz  
SWR < 1.5 (\*)  
Temperature Range -55 to +125 °C

#### Mechanical:

Body and Outer Conductor Passivated Stainless Steel  
Inner Conductor Gold Plated Beryllium  
Copper and Brass  
Coupling Torque 90 N-cm (Nominal)  
Connect/Disconnect Life > 1,000 Cycles

### Glass Bead

#### Electrical:

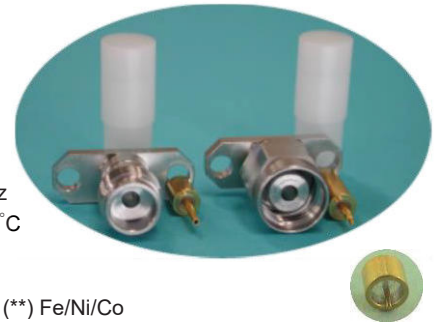
Frequency Range DC - 65 GHz  
Temperature Range -55 to +125 °C

#### Mechanical:

Body and Inner Conductor Gold Plated (\*\*) Fe/Ni/Co Alloy (KOVAR)  
Insulator #7070 Glass (Corning)

#### Others:

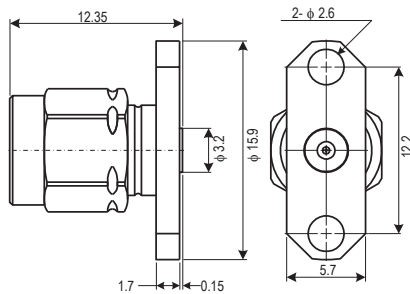
Soldering Temperature 330°C (max)  
He Leak Rate < 1x10<sup>-10</sup> Pam<sup>3</sup>/sec



**Production Status**  
2 Weeks Lead-Time  
for Shipping

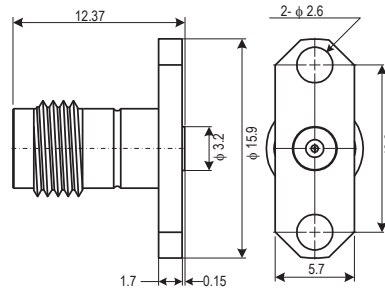
### TYPE: KPC185M302

1.85 mm Male



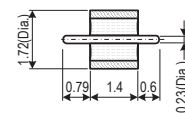
### TYPE: KPC185F302

1.85 mm Female



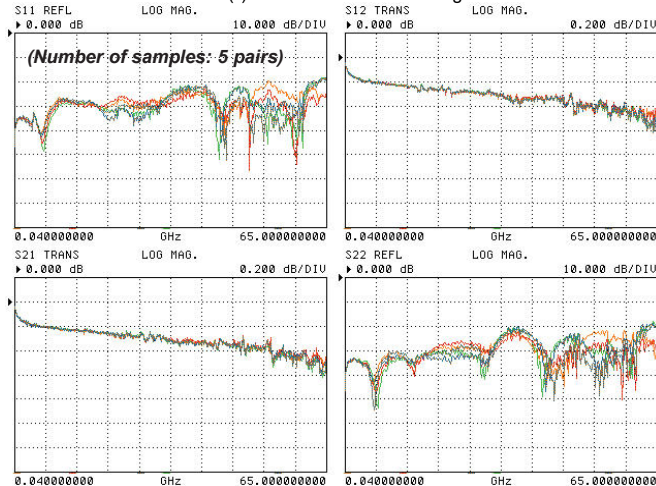
### TYPE: GB185

Glass Bead

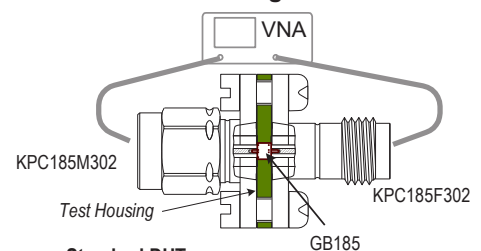


### Typical Performance

Note: (\*) As Standard DUT Configuration



### Test Configuration



Standard DUT:

Cascaded KPC185M302, GB185, and KPC185F302

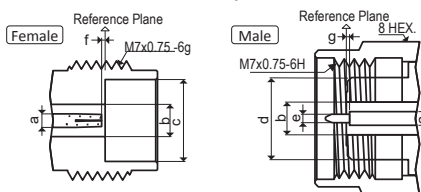
### Interface Mating Dimensions of KPC185 (1.85 mm Connectors <\*>)

#### NOTE:

All dimensions are in millimeters.

(\*\*) Thermo-sonic wire bondable gold plating

KPC185(1.85 mm)	
a	φ 0.803
b	φ 1.850
c	φ 4.770
d	φ 4.750
e	φ 0.511
f	0-0.050
g	0-0.050



<\*> Matable with 2.4 mm connectors

**RoHS Compliant**

**REACH Compliant**

Specifications Subject to Change Without Notice

Copyright(C) 2002-2017 Kawashima Manufacturing Co., Ltd. <All rights reserved.>

Rev. 03 June 2017